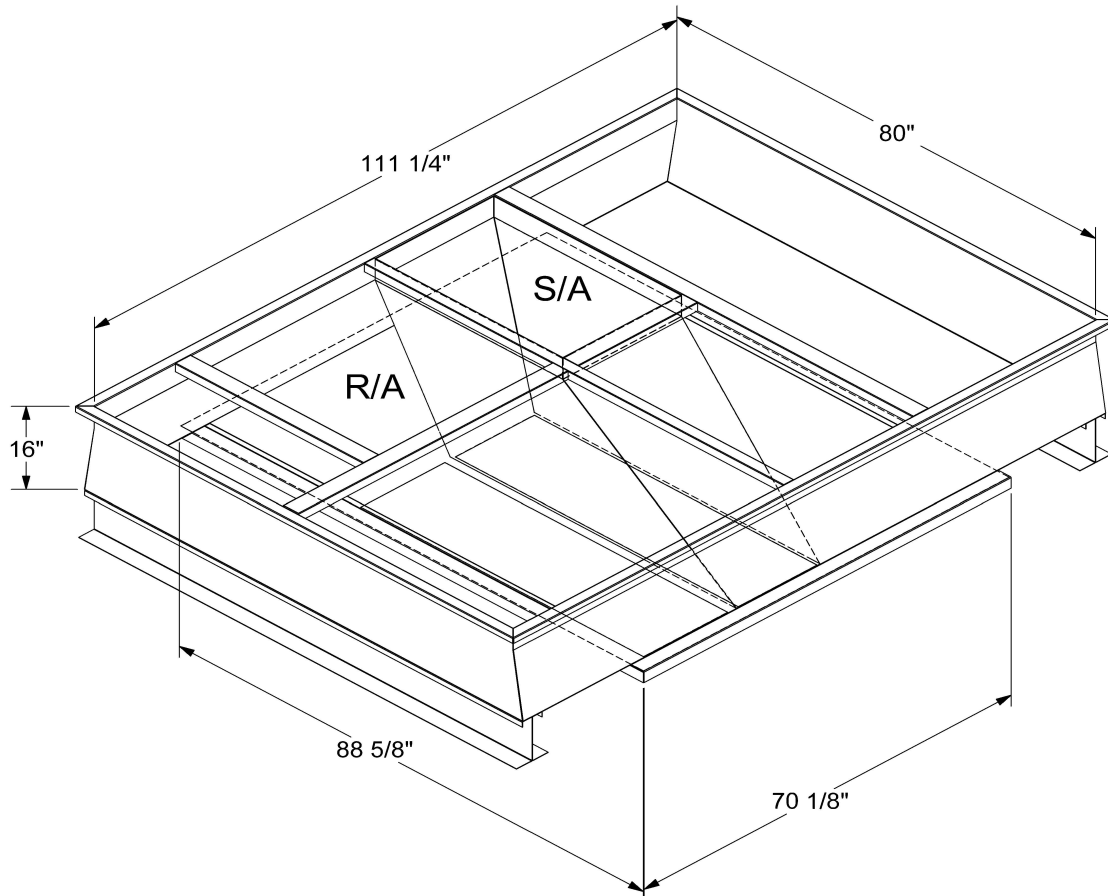


## SUBMITTAL

**Part Number**  
**2000334**

SUBMITTED TO \_\_\_\_\_  
COMPANY \_\_\_\_\_  
JOB NAME \_\_\_\_\_  
EQUIPMENT \_\_\_\_\_  
SIGNATURE \_\_\_\_\_  
DATE \_\_\_\_\_



## FEATURES

ONE PIECE WELDED CONSTRUCTION  
FACTORY INSTALLED SUPPLY TRANSITIONS  
FULLY INSULATED  
DESIGNED FOR EVEN WEIGHT DISTRIBUTION  
FABRICATED OF HEAVY GAUGE G90 GALVANIZED STEEL  
ALL WELDS SPRAYED WITH GALVANIZING COMPOUND  
GASKET PROVIDED FOR UNIT TO ADAPTER SEALING

**CAMBRIDGEPORT STRONGLY RECOMMENDS CONFIRMING THE DIMENSIONS ON THIS SUBMITTAL**

CURB ADAPTERS ARE BASED ON UNIT MANUFACTURERS STANDARD CURB DIMENSIONS.  
CAMBRIDGEPORT CANNOT BE RESPONSIBLE FOR ANY DEVIATIONS FROM FACTORY DIMENSIONS OR INCORRECT MODEL NUMBERS.