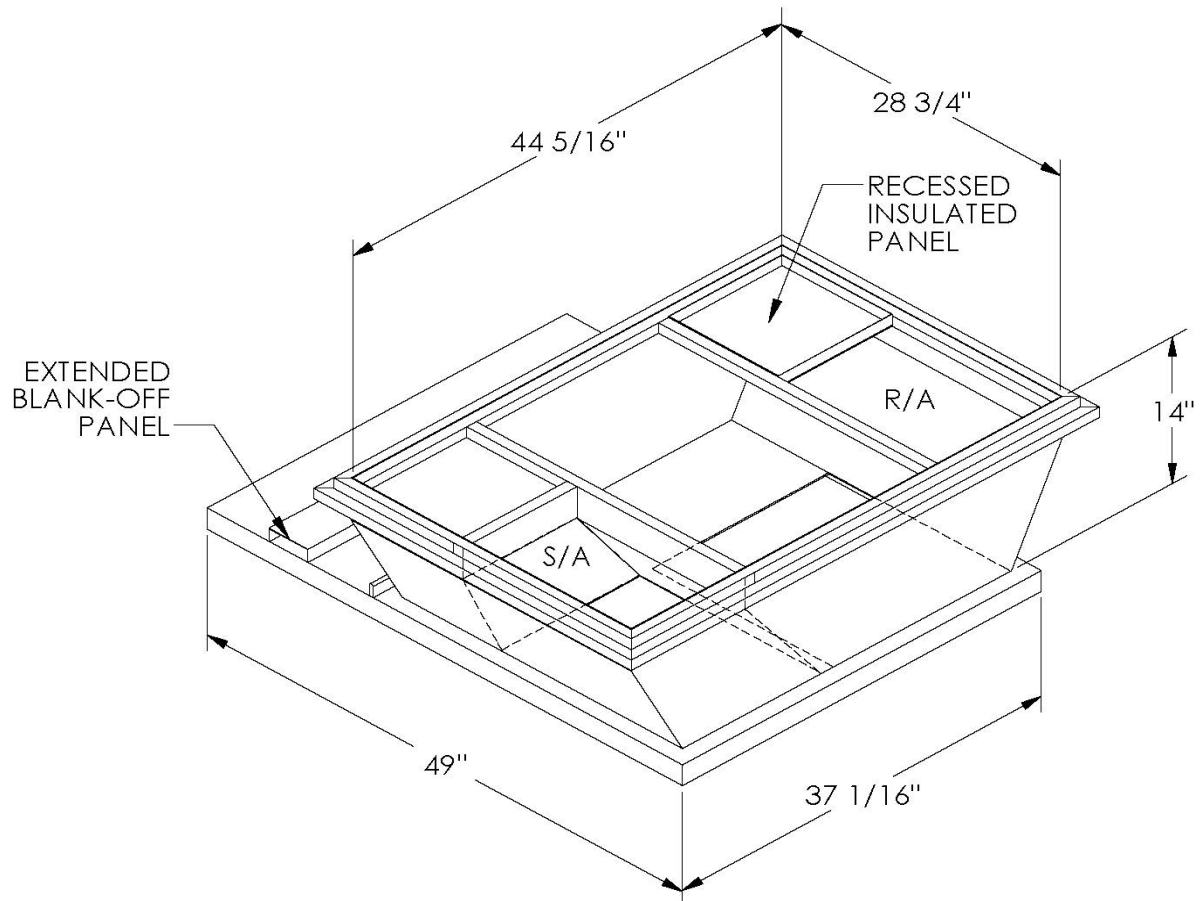


SUBMITTAL

Part Number
2007090

SUBMITTED TO _____
COMPANY _____
JOB NAME _____
EQUIPMENT _____
SIGNATURE _____
DATE _____



FEATURES

ONE PIECE WELDED CONSTRUCTION
FACTORY INSTALLED SUPPLY TRANSITIONS
FULLY INSULATED
DESIGNED FOR EVEN WEIGHT DISTRIBUTION
FABRICATED OF HEAVY GAUGE G90 GALVANIZED STEEL
ALL WELDS SPRAYED WITH GALVANIZING COMPOUND
GASKET PROVIDED FOR UNIT TO ADAPTER SEALING

CAMBRIDGEPORT STRONGLY RECOMMENDS CONFIRMING THE DIMENSIONS ON THIS SUBMITTAL

CURB ADAPTERS ARE BASED ON UNIT MANUFACTURERS STANDARD CURB DIMENSIONS.
CAMBRIDGEPORT CANNOT BE RESPONSIBLE FOR ANY DEVIATIONS FROM FACTORY DIMENSIONS OR INCORRECT MODEL NUMBERS.